

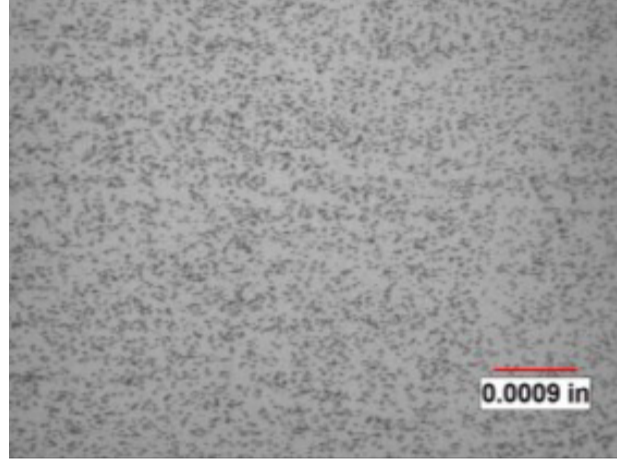
# Tears on Extruded Edge

Learn how our Material Support & Solutions team solved this customer material issue.



## THE PROBLEM

The customer experienced tearing on extruded teeth resulting in part rejection/sorting.



## THE ANALYSIS

The microstructure and mechanical properties were analyzed to evaluate the steel. Two root causes were identified: incorrect die clearance and insufficient carbide spheroidization.



## THE SOLUTION

Worthington provided the customer with the information to make the correct die adjustments, and we adjusted our annealing process to increase carbide spheroidization. These actions eliminated the tearing on extruded parts.

## — THE ACTION

When you have tearing on extruded edges, contact the Material Support & Solution team at Worthington.