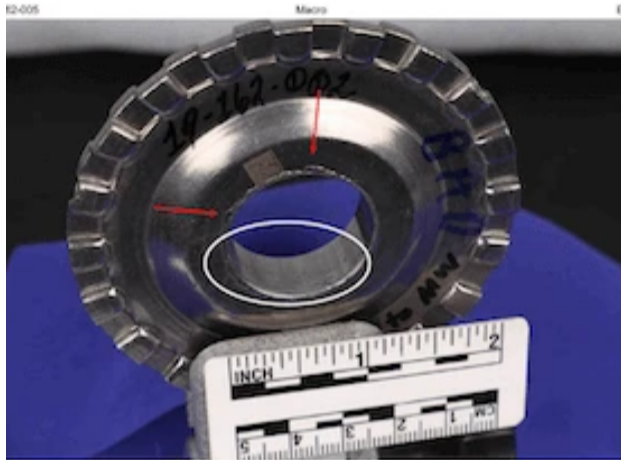


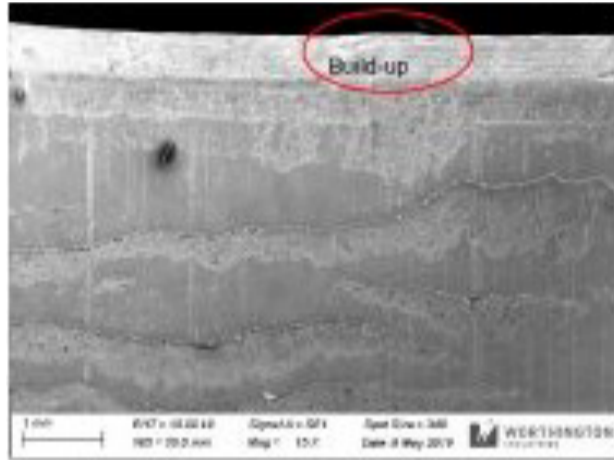
Improved Steel Grade

Learn how our Material Support & Solutions team solved this customer material issue.



THE PROBLEM

The customer was experiencing cracking and forming issues on a drawn part, resulting in additional lubrication and tooling modifications at their expense.



THE ANALYSIS

Our material's support team analyzed the steel's mechanical properties and chemistry, to determine the source of the cracking. The materials support team discovered that the customer's specification was wide, allowing for steel that was too hard for their application.



THE SOLUTION

Tightening a specification can be costly to the customer. To prevent this, we utilized our experience and depth of resources to source another grade - on the softer end of the specification - to prevent cracking without extra lubrication, tooling modifications, or tightening of the specification.

— THE ACTION

When a new program and/or supplier material is not meeting expectations for part formation, contact the Materials Support & Solution team at Worthington.