



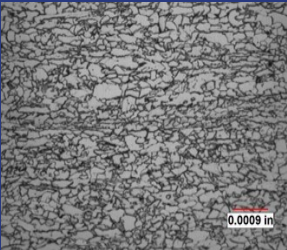
Learn how our Material Support & Solutions team solved this customer material issue:

FORMING CHALLENGE



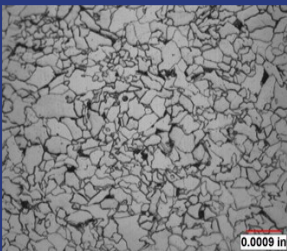
THE PROBLEM:

The customer noticed a nonconcentric draw intermittently occurring on a drawn cup (earring).



THE ANALYSIS:

Steel is generally not conducive for drawing evenly due to anisotropic properties, which can cause earring and ultimately lead to short draw height, excess scrap and potentially thinning of steel.



THE SOLUTION:

After microstructural analysis and review of chemistry, different alloying and hot mill processing requirements were selected, resulting in a more uniform microstructure and minimized earring.

THE ACTION:

When you want to minimize earring and produce parts with improved dimensions or reduce scrap, for any drawn cup that has earring tendencies on rim of drawn edges, contact the Material Support & Solutions team at Worthington.

CALL US AT 1-800-944-2255

WORTHINGTON INDUSTRIES. 200 WEST OLD WILSON BRIDGE ROAD COLUMBUS, OH 43085